



pearson  
ferrier®



6 ENGEL CLOSE  
Ramsbottom, BL0 9XU  
£1,295 Per Calendar Month



# 6 ENGEL CLOSE

## Property at a glance

- MID TOWNHOUSE
- FOUR BEDROOMS
- IMMACULATE INTERIOR
- CUL-DE-SAC
- LARGE REAR GARDEN
- PARKING & GARAGE

6 Engel Close, Ramsbottom is a beautifully presented, four bedroom, three storey mid townhouse located in a cul-de-sac within this popular and recent residential development within a short drive to the town centre and the motorway network. The house is in great condition and benefits from gas fired central heating and double glazing, the accommodation comprises; entrance hall with wc/cloaks and access into the garage, fitted dining kitchen, first floor, living room, master bedroom with ensuite shower room, second floor, three bedrooms and bathroom. Outside there is a driveway leading to an integral garage and to the rear a generously sized westerly facing lawned garden. Please note this property will be available towards the end of March.

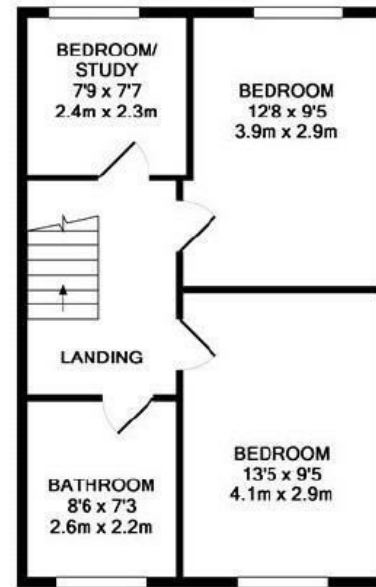
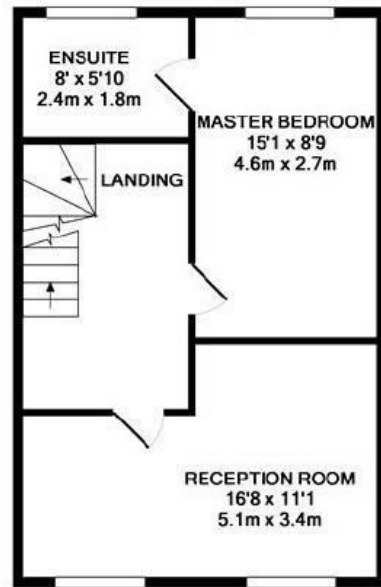
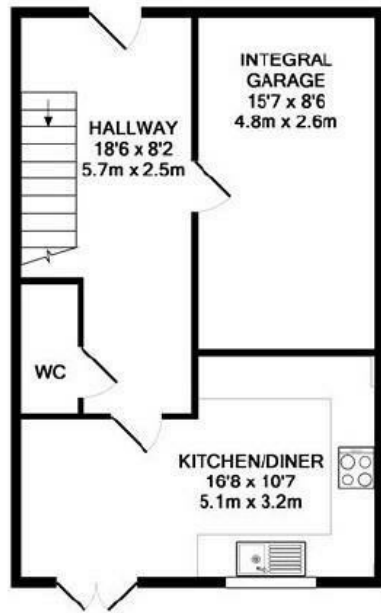
Please note that you will be required to pay a Holding Deposit (equivalent to one weeks rent) to secure the property.

EPC Rating C  
Council Tax Band C

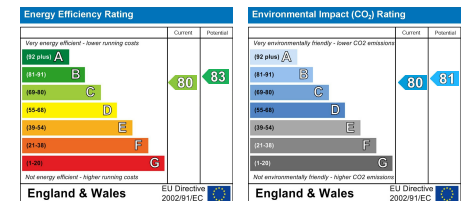








**TOTAL APPROX. FLOOR AREA 1310 SQ.FT. (121.7 SQ.M.)**  
Made with Metropix ©2011



Ramsbottom Office  
11 Bolton Street, Ramsbottom, BL0 9HU  
Telephone: 01706 822630  
Fax: #  
Email: ramsbottom@pearsonferrier.co.uk

[www.pearsonferrier.co.uk](http://www.pearsonferrier.co.uk)



All statements contained in these particulars are for indicative purposes only and are made without responsibility on the part of Pearson Ferrier and the vendors of this property and are not to be relied on as statements or representations of fact. Potential purchasers should satisfy themselves by inspection or otherwise as to the accuracy of such details contained in these particulars.